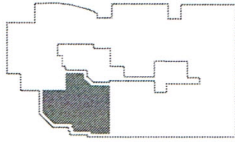
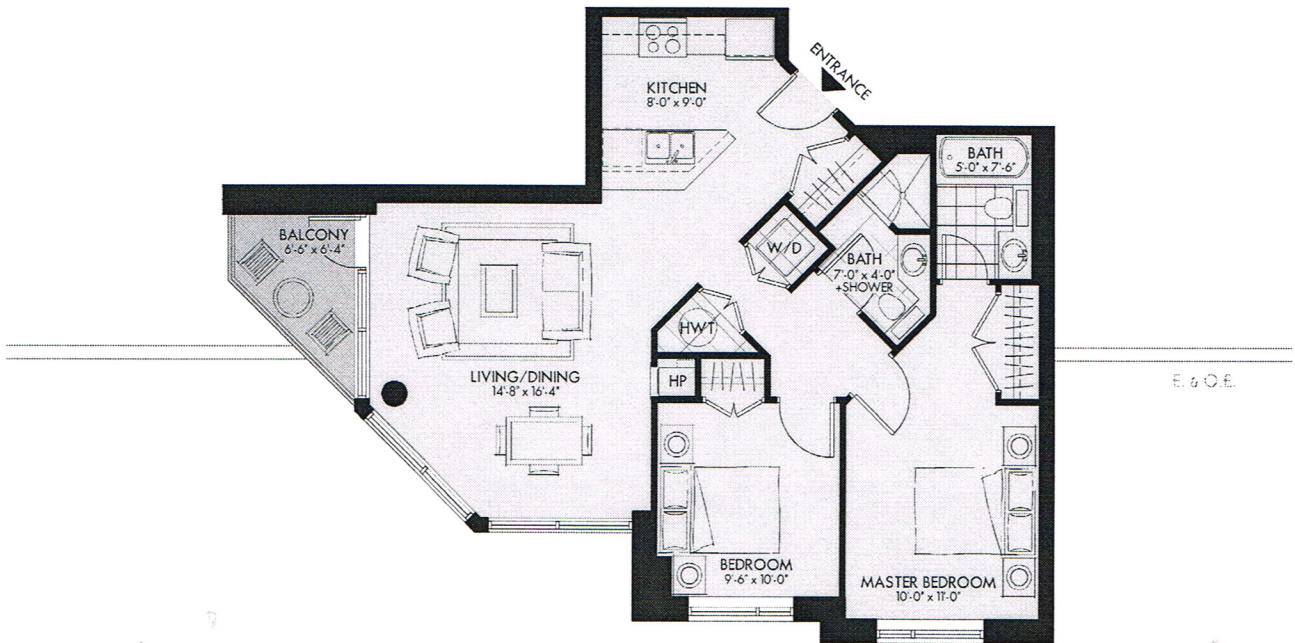


# HUDSON PARK II

BY CHARLESFORT



KEY PLAN  
3rd to 14th floor



## THE BROOKLYN

892 sq. ft



Brooklyn is the most populous of the five boroughs of New York City. It is home to a number of world-famous buildings that are monuments to the Art Deco movement and is a bustling metropolis within greater New York City, playing home to countless celebrities and personalities throughout its history. Brooklyn is connected to Manhattan Island via the stunningly beautiful and iconic Brooklyn Bridge crossing the East River.

